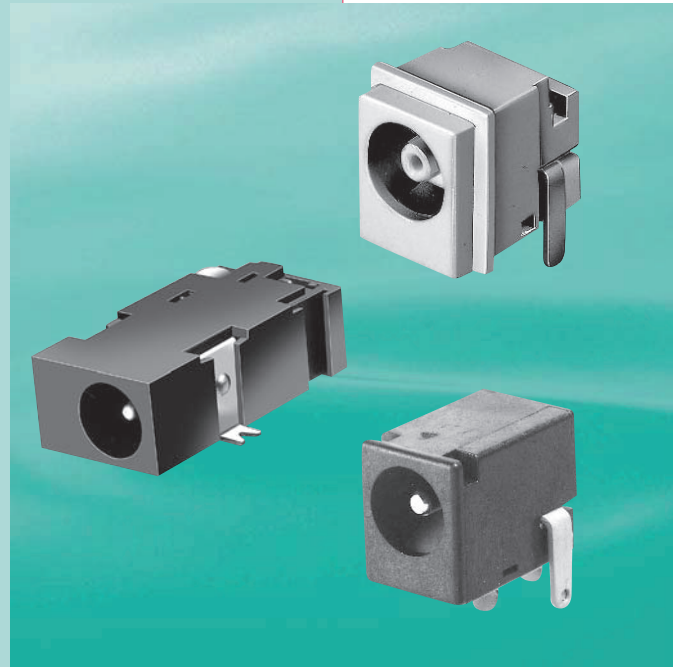


# DC Power Jacks



Contents & Specifications .....	1
DC Power Jacks(JEITA RC-5320A Standard)	
Product Lineup .....	2
DC Power Jacks .....	3 - 11
DC Power Jacks	
Product Lineup .....	12
DC Power Jacks .....	13 - 16
for Automotive Equipment Use	
DC Power Jacks (JEITA RC-5322 Standard)	
DC Power Jacks .....	17
for DC-Out	
DC-Out Power Jacks (JEITA RC-5321 Standard)	
DC-Out Power Jacks .....	18

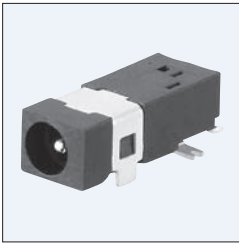
## Specifications

Insulation Resistance		100MΩ min. (at 500V DC)
Withstanding Voltage		500V AC (r.m.s) / 1 minute
Contact Resistance	Plug-① and Plug-②	50mΩ max.
	others	30mΩ max.

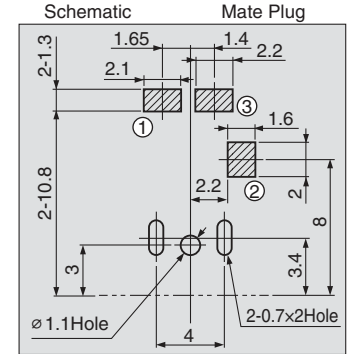
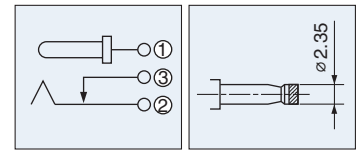
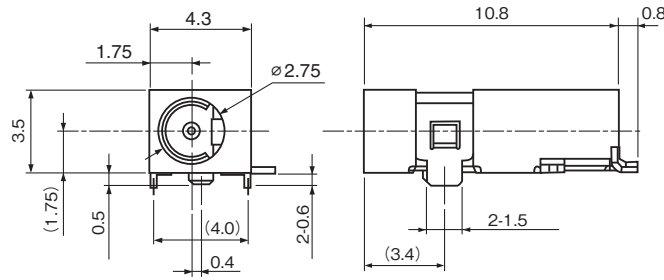
Voltage Classification	Mate Plug (mm)	Schematic	DC. (Nominal Value)	Rated Voltage (V)	Rated Current (A)	Model No.				
						SMT		PCB		for Lead Wire Terminals
						Horizontal Type		Horizontal Type	Vertical Type	
1			$V \leq 3.15$	3.15	2	(h=1.75mm) HEC3450  (h=1.8mm) HEC3357  (h=3mm) HEC3350	(h=2.2mm) HEC4306  (h=3mm) HEC3301		—	
2			$3.15 < V \leq 6.3$	6.3	2	(h=2.6mm) HEC3654  (h=3.8mm) HEC3650	(h=2.2mm) HEC3604  (h=3mm) HEC3600  (h=6.5mm) HEC3610	—	HEC4670	
						—	(h=2.6mm) HEC3616	—	—	
						—	(h=3mm) HEC3690  (h=6.5mm) HEC3680	—	—	
3			$6.3 < V \leq 10.5$	10.5	2	(h=3mm) HEC3150	(h=3mm) HEC3110  (h=6.5mm) HEC3100	(l=14mm) HEC3130	—	
						—	(h=3mm) HEC4100	(l=14mm) HEC3140	—	
4			$10.5 < V \leq 13.5$	13.5	2	(h=4mm) HEC3850	(h=4mm) HEC4801  (h=6.5mm) HEC3800	(l=14mm) HEC3830	—	
5			$13.5 < V \leq 18.0$	18.0	2	—	(h=7mm) HEC3900	(l=14mm) HEC3930	—	

## HEC3450

### Voltage Classification 1, Horizontal Type



h = 1.75  
SMT  
With terminal  
for reinforcement

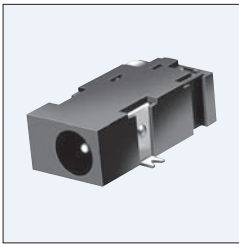


PCB Layout  
(Top View)

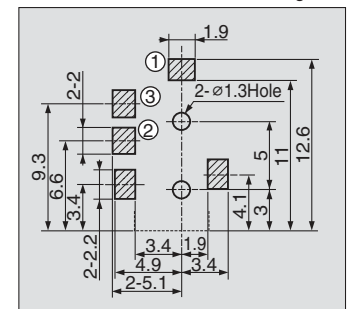
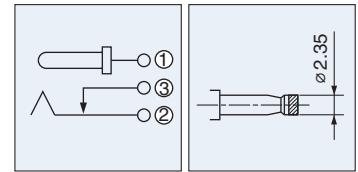
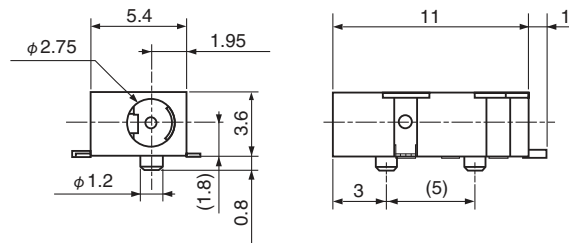
Housing Color	Model No.
Black	HEC3450-012010

## HEC3357

### Voltage Classification 1, Horizontal Type



h = 1.8  
SMT

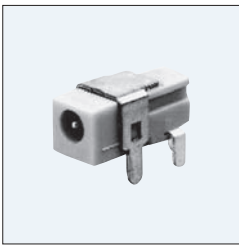


PCB Layout  
(Top View)

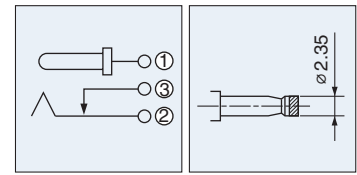
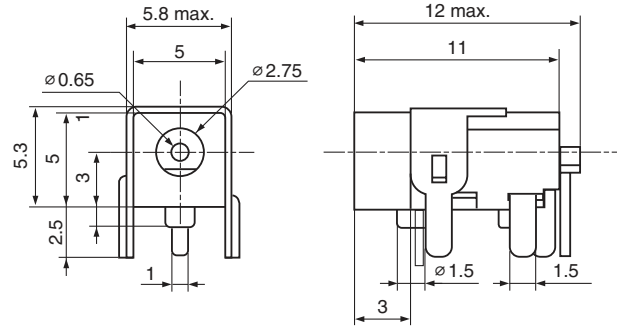
Housing Color	Model No.
Black	HEC3357-012010
Yellow	HEC3357-012020

**HEC3301**

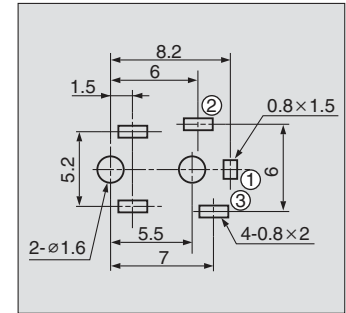
Voltage Classification 1, Horizontal Type



h=3



Schematic Mate Plug

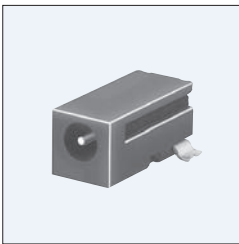


Hole Layout (Bottom View)

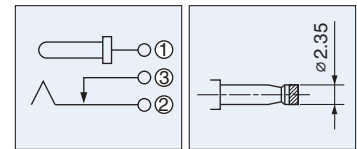
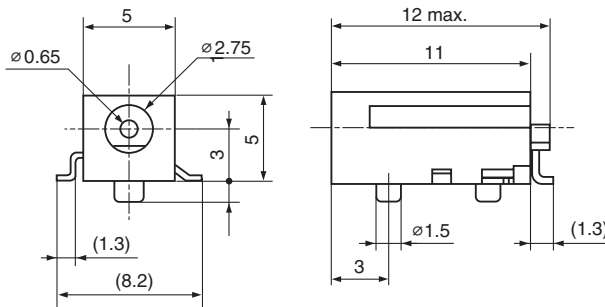
Housing Color	Model No.
Black	HEC3301-017110
Yellow	HEC3301-017120

**HEC3350**

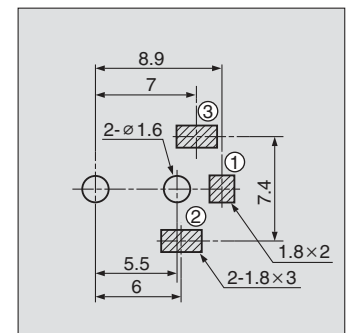
Voltage Classification 1, Horizontal Type



h=3  
SMT



Schematic Mate Plug

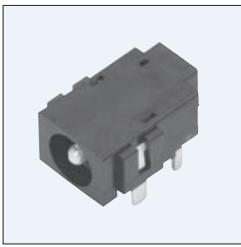


PCB Layout (Top View)

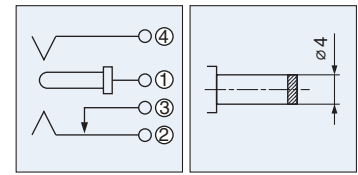
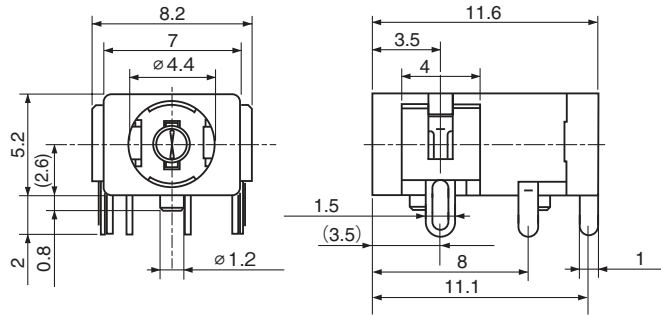
Packaging Style	Bulk (Hand Soldering Only)	Taping (Reflow Soldering)
Housing Color		
Black	HEC3350-010110	HEC3350-012110

## HEC3606

### Voltage Classification 2, Horizontal Type

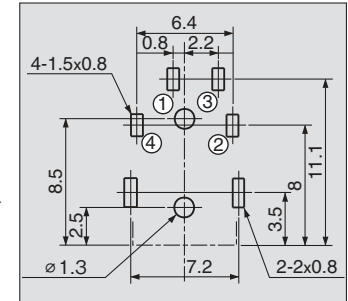


h=2.6



Schematic

Mate Plug

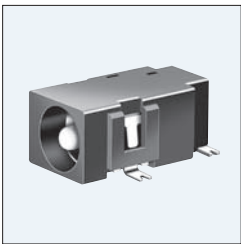


Hole Layout  
(Bottom View)

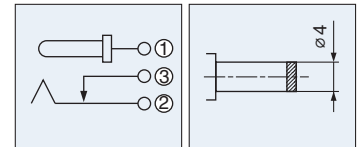
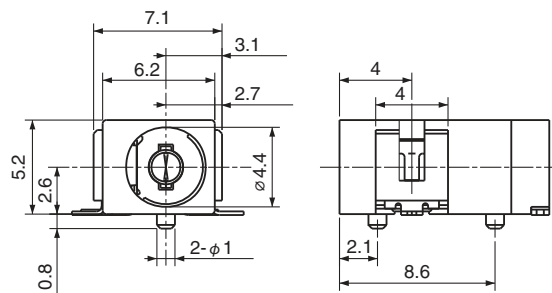
Housing Color	Model No.
Black	HEC3616-010010

## HEC3654

### Voltage Classification 2, Horizontal Type

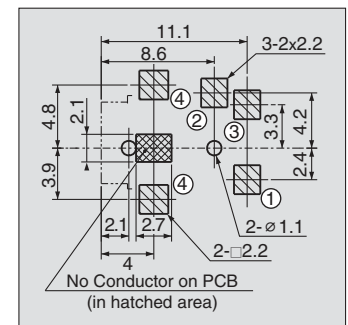


h=2.6  
SMT



Schematic

Mate Plug

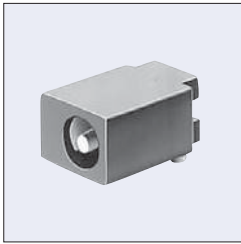


PCB Layout  
(Top View)

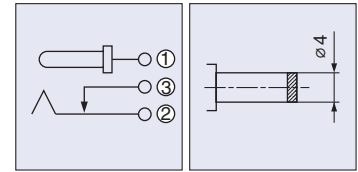
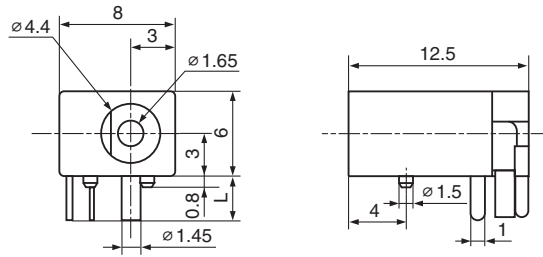
Housing Color	Model No.
Black	HEC3654-012010
Yellow	HEC3654-012020

## HEC3600

### Voltage Classification 2, Horizontal Type

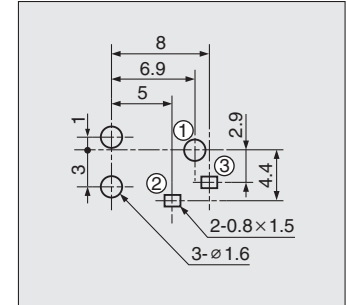


h=3



Schematic

Mate Plug

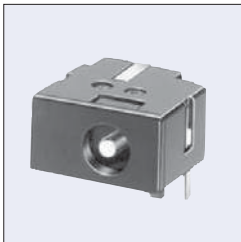


Hole Layout  
(Bottom View)

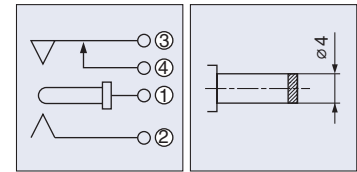
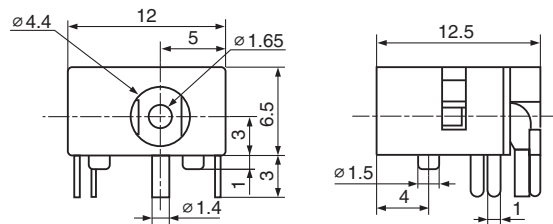
Dimension L	L=1.5	L=2.5	L=3
Housing Color			
Black	HEC3600-016010	HEC3600-010510	HEC3600-016110
Yellow	HEC3600-016020	HEC3600-010520	HEC3600-016120

## HEC3690

### Voltage Classification 2, Horizontal Type

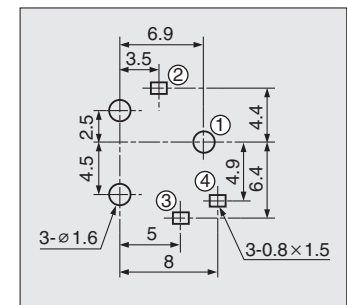


h=3



Schematic

Mate Plug

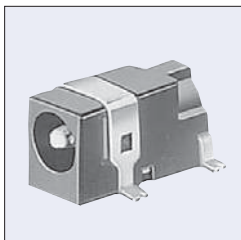


Hole Layout  
(Bottom View)

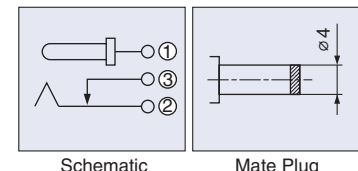
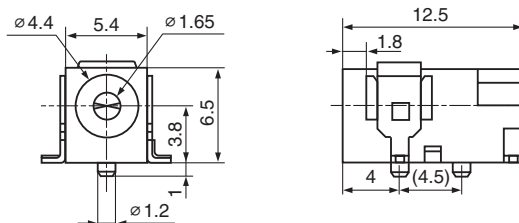
Housing Color	Model No.
Black	HEC3690-015210
Yellow	HEC3690-015220

## HEC3650

### Voltage Classification 2, Horizontal Type

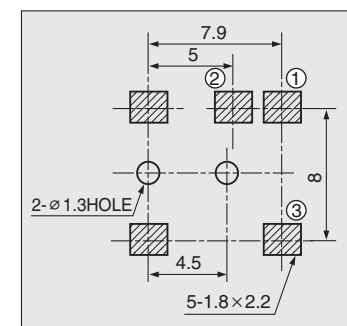


h=3.8  
SMT



Schematic

Mate Plug

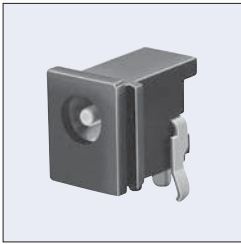


PCB Layout  
(Top View)

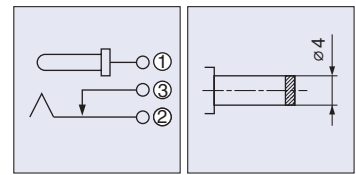
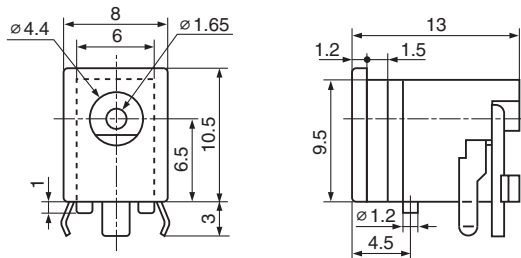
Packaging Style	Bulk (Hand Soldering Only)	Taping (Reflow Soldering)
Housing Color		
Black	HEC3650-017010	HEC3650-018010
Yellow	HEC3650-017020	HEC3650-018020

**HEC3610**

Voltage Classification 2, Horizontal Type

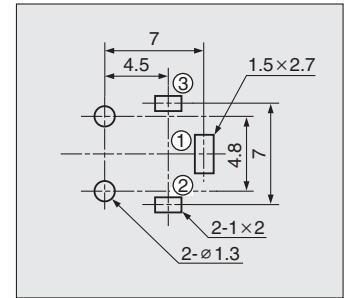


h=6.5



Schematic

Mate Plug

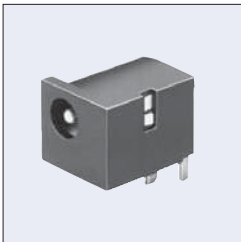


Hole Layout  
(Bottom View)

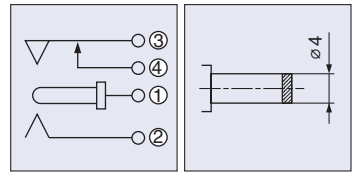
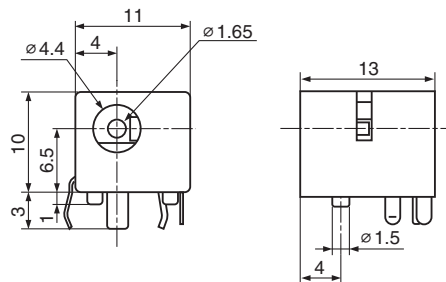
Housing Color	Model No.
Black	HEC3610-010010
Yellow	HEC3610-010020

**HEC3680**

Voltage Classification 2, Horizontal Type

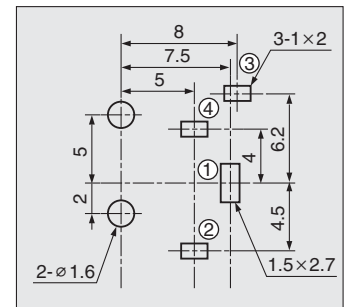


h=6.5



Schematic

Mate Plug



Hole Layout  
(Bottom View)

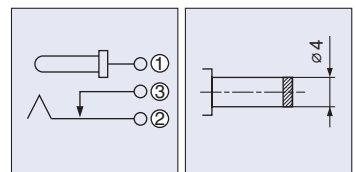
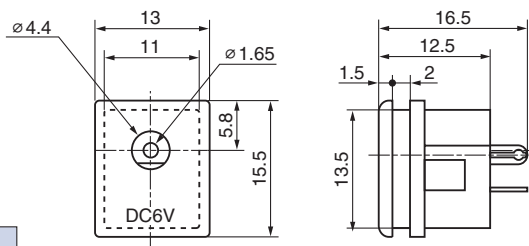
Housing Color	Model No.
Black	HEC3680-010010
Yellow	HEC3680-010020

**HEC4670**

Voltage Classification 2

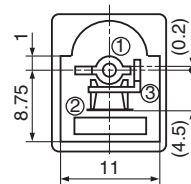


Lead Wire Terminal



Schematic

Mate Plug

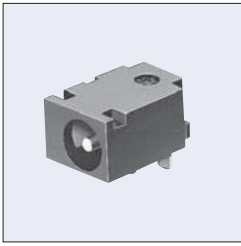


Housing Color	Model No.
Black	HEC4670-010210

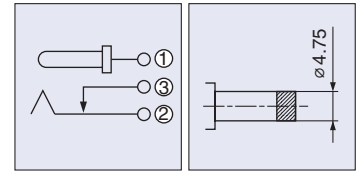
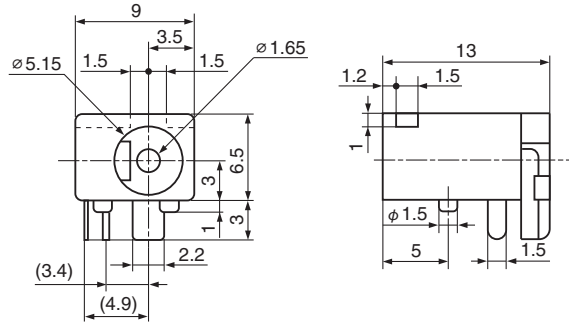


## HEC3110

### Voltage Classification 3, Horizontal Type

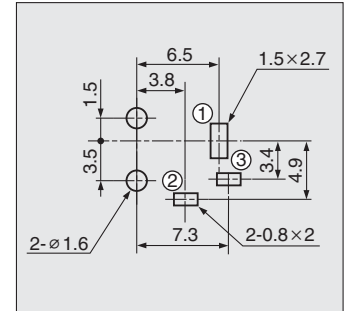


h=3



Schematic

Mate Plug

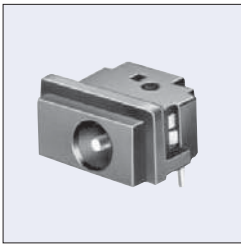


Hole Layout  
(Bottom View)

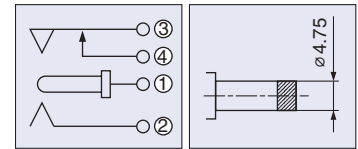
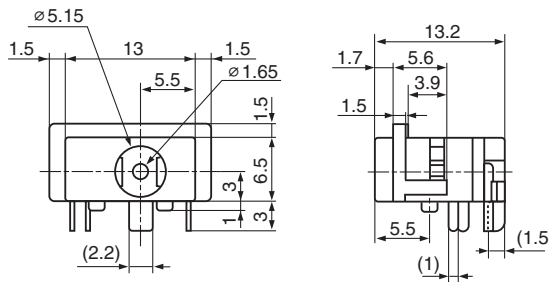
Housing Color	Model No.
Black	HEC3110-01-010
Yellow	HEC3110-01-020

## HEC4100

### Voltage Classification 3, Horizontal Type

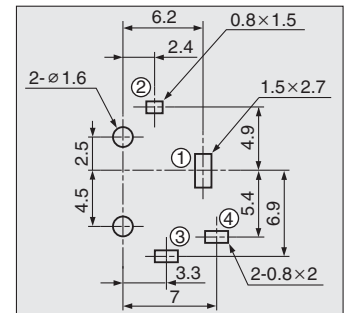


h=3



Schematic

Mate Plug



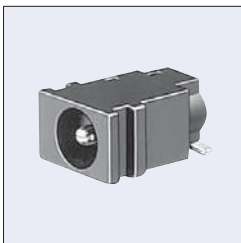
Hole Layout  
(Bottom View)

Housing Color	Model No.
Black	HEC4100-01-010
Yellow	HEC4100-01-020

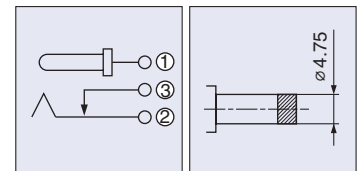
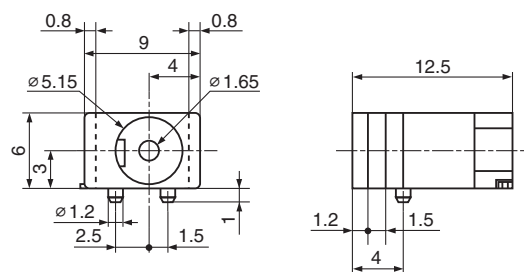
※Hand Soldering Only

## HEC3150

### Voltage Classification 3, Horizontal Type

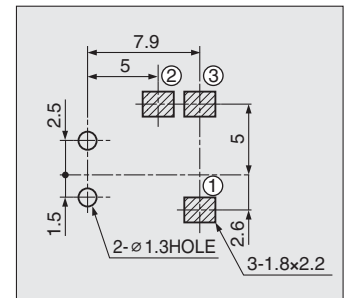


h=3  
SMT



Schematic

Mate Plug

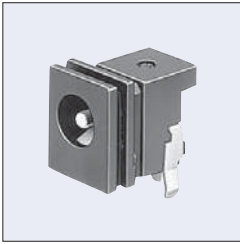


PCB Layout  
(Top View)

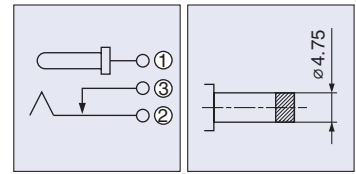
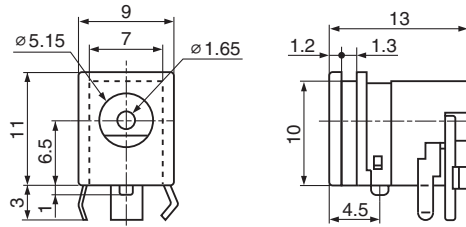
Packaging Style Housing Color	Bulk (Hand Soldering Only)	Taping (Reflow Soldering)
	Black	HEC3150-010010
Yellow	HEC3150-010020	HEC3150-012120

## HEC3100

### Voltage Classification 3, Horizontal Type

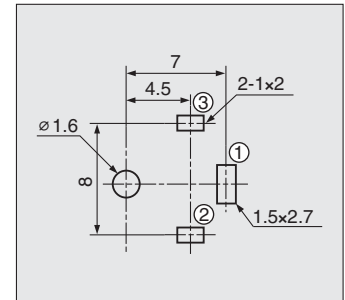


h=6.5



Schematic

Mate Plug

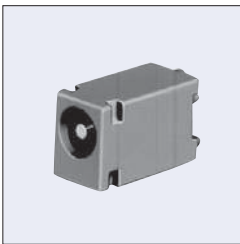


Hole Layout  
(Bottom View)

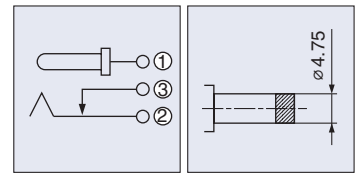
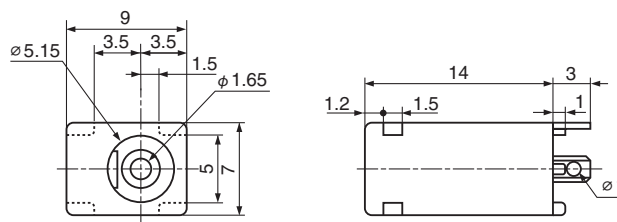
Housing Color	Model No.
Black	HEC3100-010010
Yellow	HEC3100-010020

## HEC3130

### Voltage Classification 3, Vertical Type

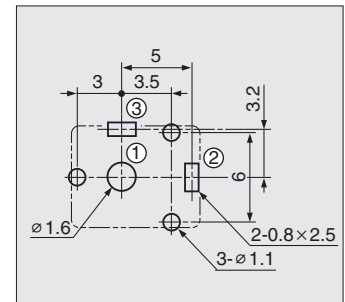


ℓ=14



Schematic

Mate Plug

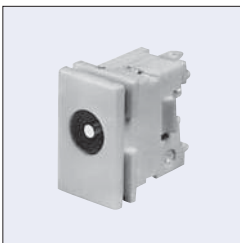


Hole Layout  
(Bottom View)

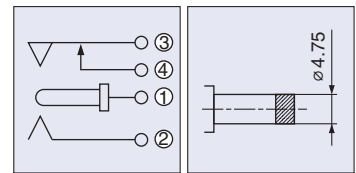
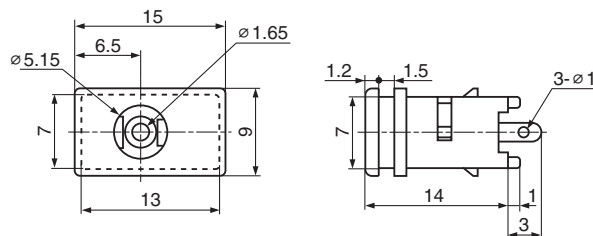
Housing Color	Model No.
Black	HEC3130-010010
Yellow	HEC3130-010020

## HEC3140

### Voltage Classification 3, Vertical Type

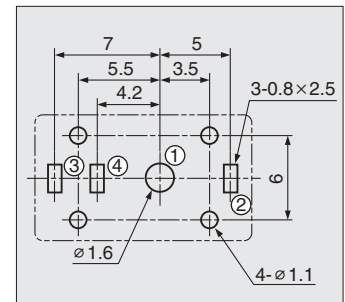


ℓ=14



Schematic

Mate Plug

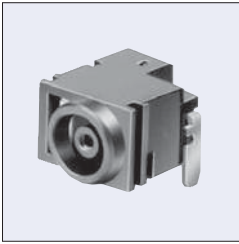


Hole Layout  
(Bottom View)

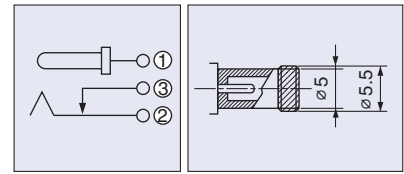
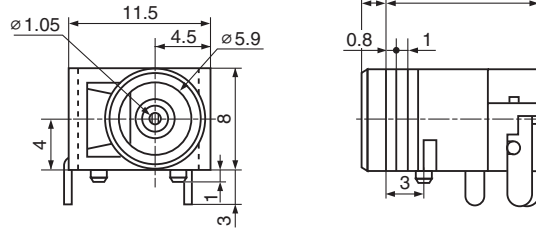
Housing Color	Model No.
Black	HEC3140-010010
Yellow	HEC3140-010020

## HEC4801

Voltage Classification 4, Horizontal Type

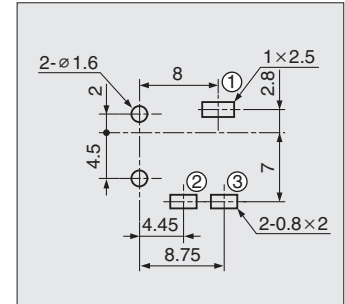


h=4



Schematic

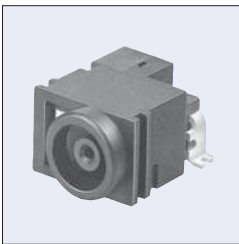
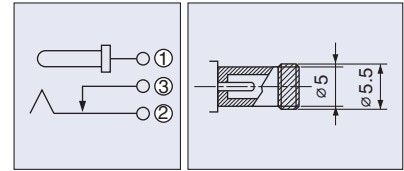
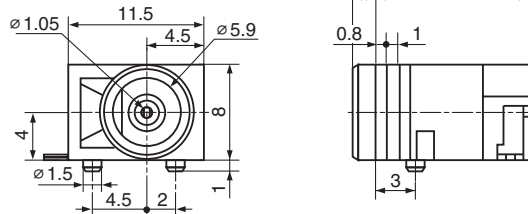
Mate Plug


 Hole Layout  
(Bottom View)

Housing Color	Model No.
Black	HEC4801-010110
Yellow	HEC4801-010120

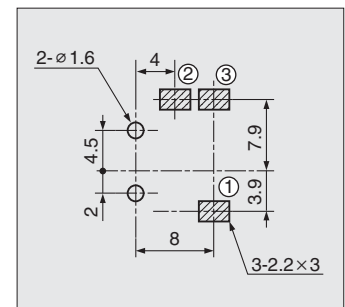
## HEC3850

Voltage Classification 4, Horizontal Type


 h=4  
SMT


Schematic

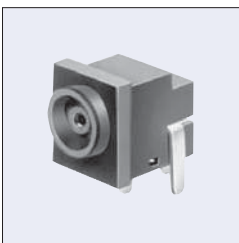
Mate Plug


 PCB Layout  
(Top View)

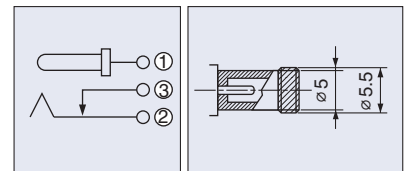
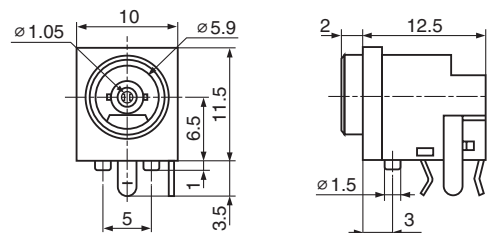
Packaging Style	Bulk (Hand Soldering Only)	Taping (Reflow Soldering)
Housing Color		
Black	HEC3850-010110	HEC3850-012110
Yellow	HEC3850-010120	HEC3850-012120

## HEC3800

Voltage Classification 4, Horizontal Type

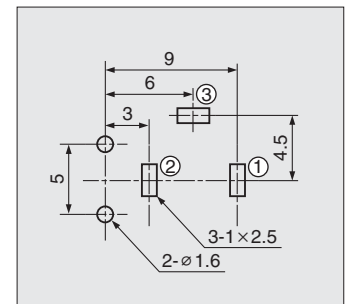


h=6.5



Schematic

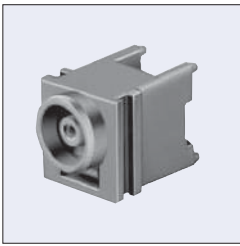
Mate Plug


 Hole Layout  
(Bottom View)

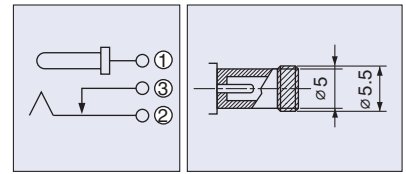
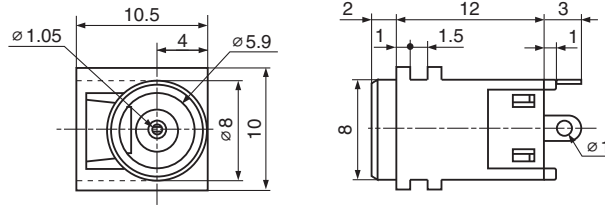
Housing Color	Model No.
Black	HEC3800-01-010
Yellow	HEC3800-01-020

**HEC3830**

Voltage Classification 4, Vertical Type

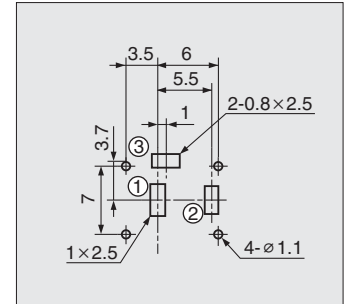


ℓ=14



Schematic

Mate Plug

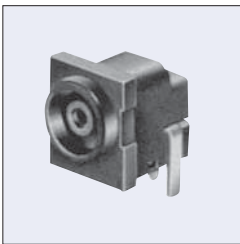


Hole Layout  
(Bottom View)

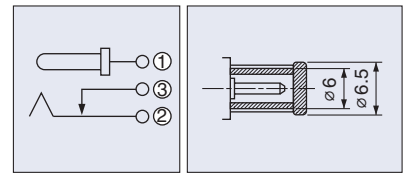
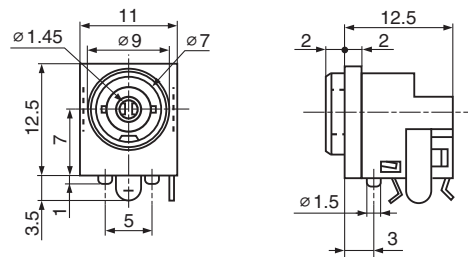
Housing Color	Model No.
Black	HEC3830-010010
Yellow	HEC3830-010020

**HEC3900**

Voltage Classification 5, Horizontal Type

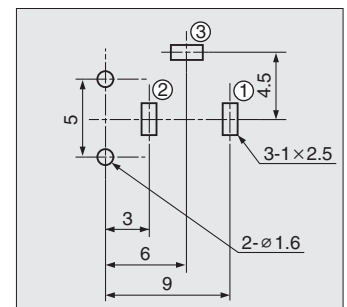


h=7



Schematic

Mate Plug

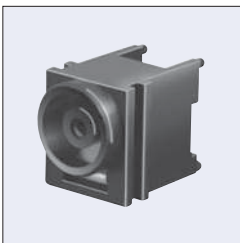


Hole Layout  
(Bottom View)

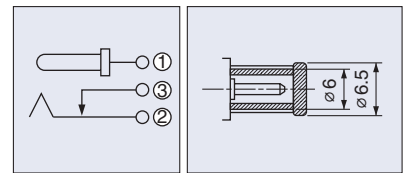
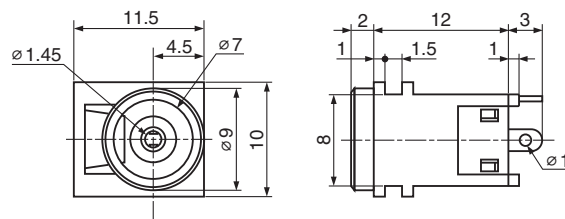
Housing Color	Model No.
Black	HEC3900-010110
Yellow	HEC3900-010120

**HEC3930**

Voltage Classification 5, Vertical Type

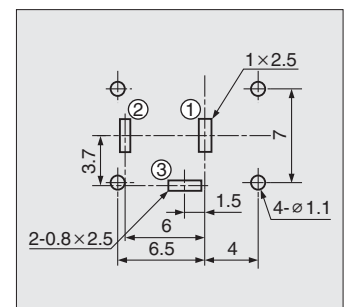


ℓ=14



Schematic

Mate Plug



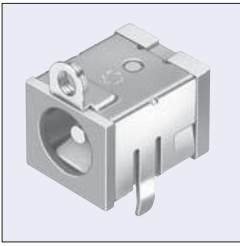
Hole Layout  
(Bottom View)

Housing Color	Model No.
Black	HEC3930-010010
Yellow	HEC3930-010020

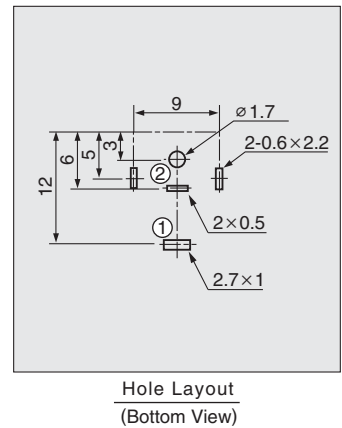
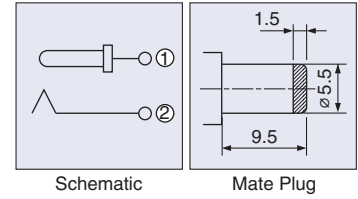
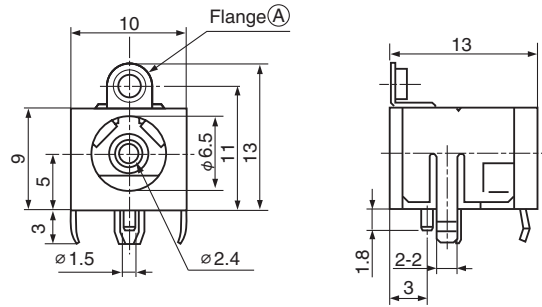
Model	Mate Plug (mm)	Schematic	Pin DIA (mm)	Model No.		
				PCB		
				Horizontal Type		
Model A			2	(3A 16V DC h=6.5mm) <b>HEC0470-01-630</b>	(3A 16V DC h=6.5mm) <b>HEC2305-016250</b>	
				( 2A 12V DC :Between Plug and Jack 1.6A 12V DC :Break terminal, Make terminal h=6.5mm ) <b>HEC2392-0101509</b>		
				(3A 16V DC h=6.5mm) <b>HEC0470-01-640</b>	(3A 16V DC h=6.5mm) <b>HEC2305-016260</b>	
				(3A 16V DC h=5mm) <b>TCS7382-210177</b>		
Model E			1.3	(0.5A 12V DC h=2.5mm) <b>HEC2707-012010</b>	(0.5A 12V DC h=2.5mm) <b>HEC2711-01-620</b>	(0.5A 12V DC h=2.5mm) <b>HEC2712-01-620</b>
				(0.5A 12V DC h=2.5mm) <b>HEC2711-01-020</b>	(0.5A 12V DC h=2.5mm) <b>HEC2712-010120</b>	

**TCS7382**

Model A, Horizontal Type



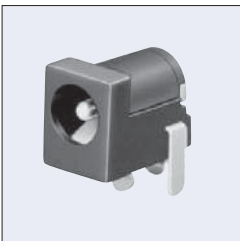
TCS7382-210177  
h=5  
Rating: 3A 16V DC



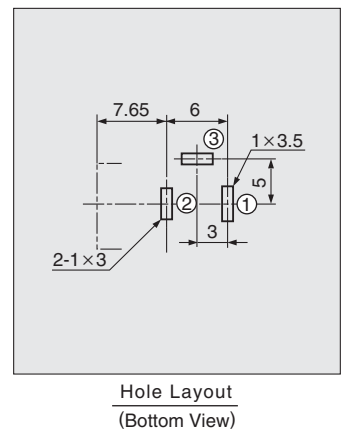
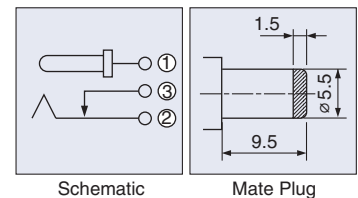
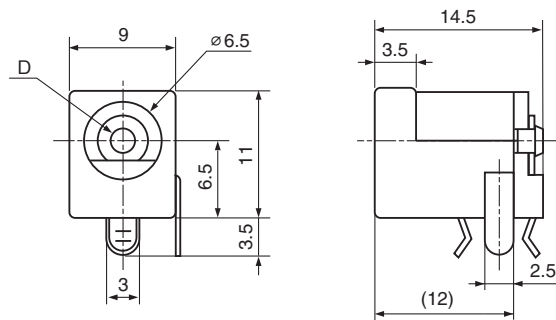
Housing Color	Model No.	Flange (A)
Black	TCS7382-211177	With
Yellow	TCS7382-210177	With
Black	TCS7382-011177	Without
Yellow	TCS7382-010177	Without

**HEC0470**

Model A, Horizontal Type



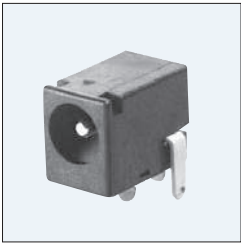
HEC0470-01-630  
h=6.5  
Rating: 3A 16V DC



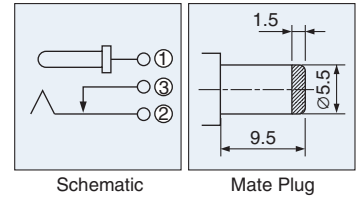
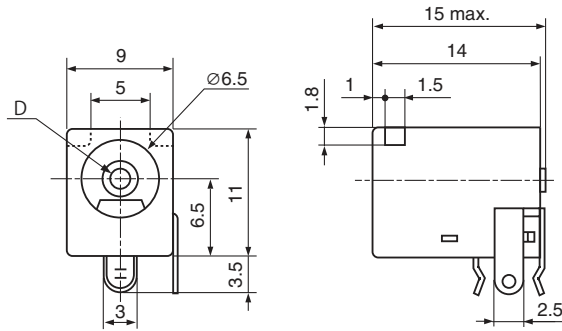
Dimension D	Model No.
∅2	HEC0470-01-630
∅2.35	HEC0470-01-640

**HEC2305**

Model A, Horizontal Type

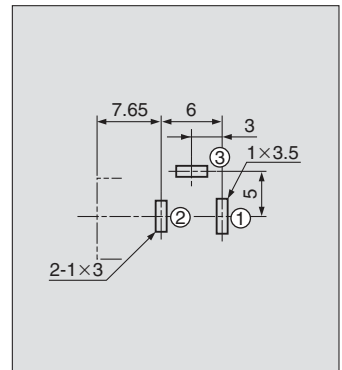


HEC2305-016250  
h=6.5  
Rating: 3A 16V DC



Schematic

Mate Plug

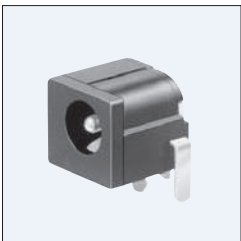


Hole Layout  
(Bottom View)

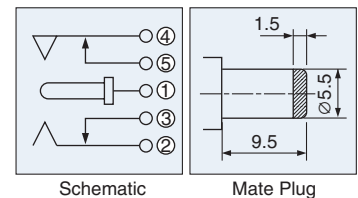
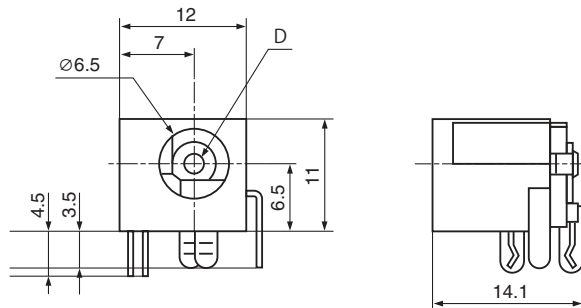
Dimension D	Model No.
Ø2	HEC2305-016250
Ø2.35	HEC2305-016260

**HEC2392**

Model A, Horizontal Type

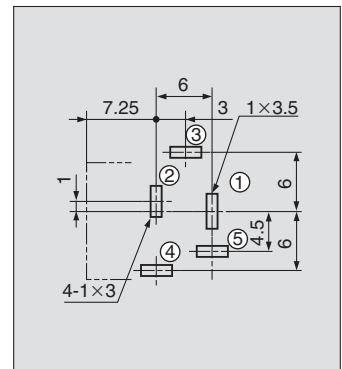


h=6.5  
Rating: 2A 12V DC  
1.6A 12V DC  
(Terminal ② ③  
④ ⑤)



Schematic

Mate Plug



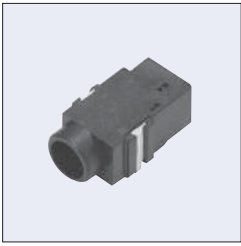
Hole Layout  
(Bottom View)

Dimension D	Model No.
Ø2	HEC2392-0101509

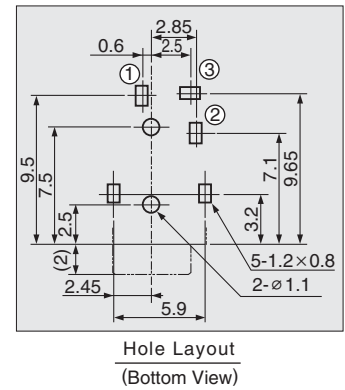
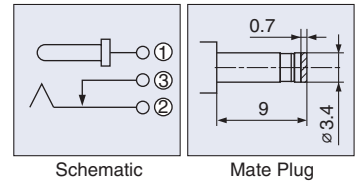
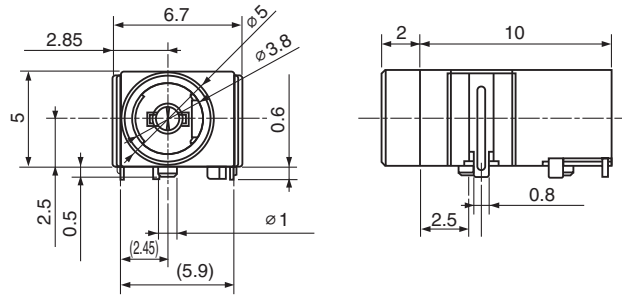
※Hand Soldering Only

**HEC2707**

Model E, Horizontal Type



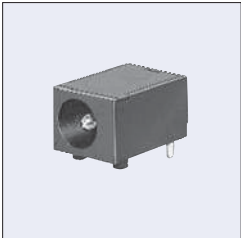
h=2.5  
 Rating: 0.5A 12V DC  
 With terminal for reinforcement



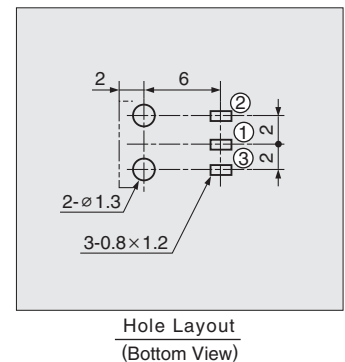
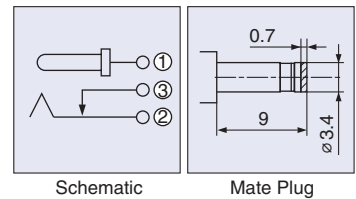
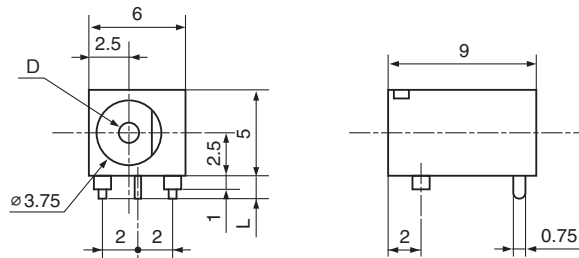
Housing Color	Model No.
Black	HEC2707-012010

**HEC2711**

Model E, Horizontal Type



HEC2711-01-020  
 h=2.5  
 Rating: 0.5A 12V DC

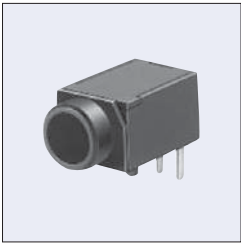


Dimension		Model No.
D	L	
1.3	1.5	HEC2711-01-020
	3	HEC2711-01-620

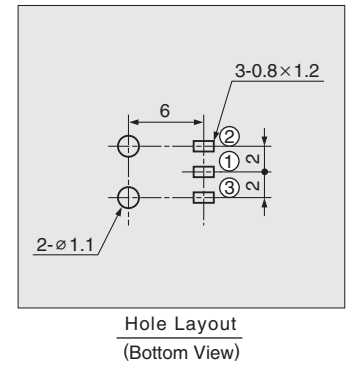
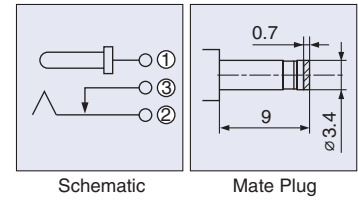
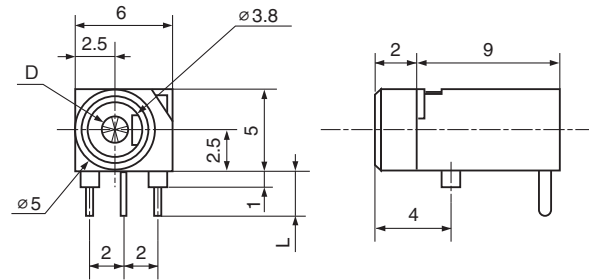


**HEC2712**

Model E, Horizontal Type



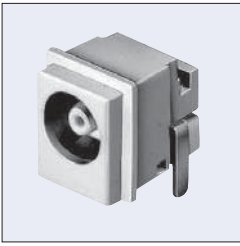
HEC2712-01-620  
h=2.5  
Rating: 0.5A 12V DC



Dimension		Model No.
D	L	
$\phi 1.3$	1.5	HEC2712-010120
	3	HEC2712-01-620

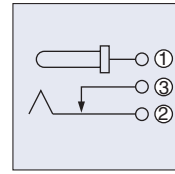
**HEC7000**

## Horizontal Type

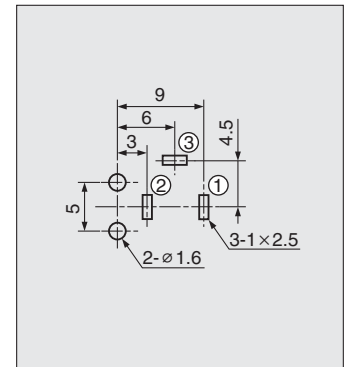
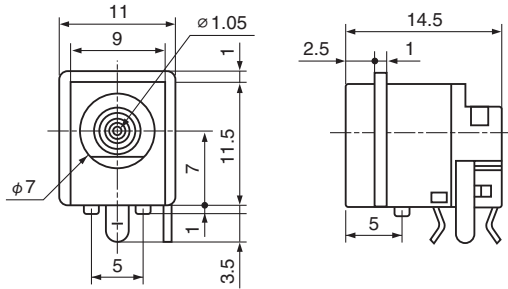


h=7  
DC 12 / 24 V

for Power Supply to Electronic  
Equipment Used in a Car



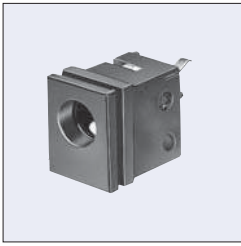
Schematic


 Hole Layout  
(Bottom View)

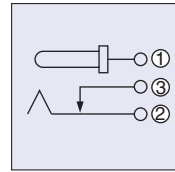
Housing Color	Model No.
Black	HEC7000-010010
Yellow	HEC7000-010020

**HEC8630**

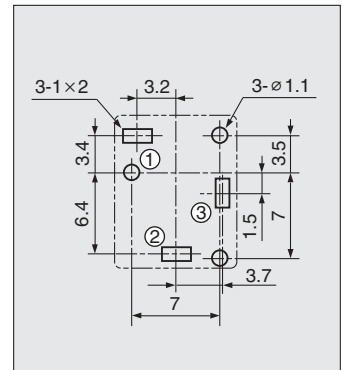
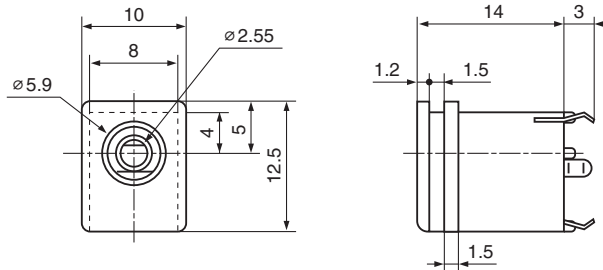
Voltage Classification 2 ( $3.15 < V \leq 6.3$ ), Vertical Type



$l=14$



Schematic

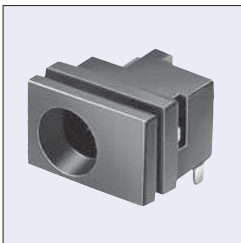


Hole Layout  
(Bottom View)

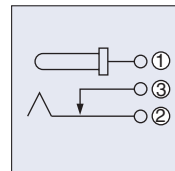
Housing Color	Model No.
Black	HEC8630-010010

**HEC8110**

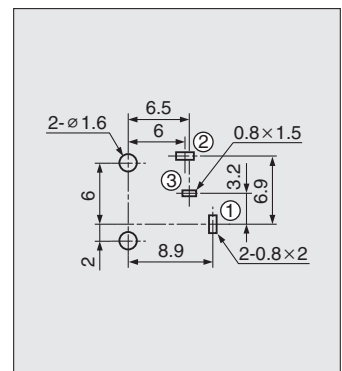
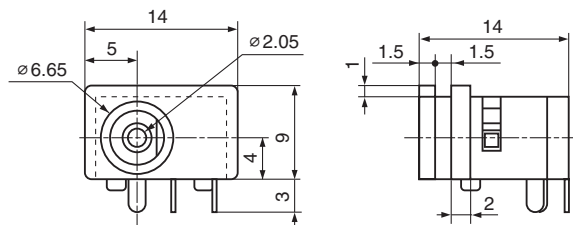
Voltage Classification 3 ( $6.3 < V \leq 10.5$ ), Horizontal Type



$h=4$



Schematic



Hole Layout  
(Bottom View)

Housing Color	Model No.
Black	HEC8110-010010

**Model No. Table**

Model No.	Page						
HEC0470	13	HEC3130	9	HEC3610	7	HEC3850	10
HEC2305	14	HEC3140	9	HEC3616	5	HEC3900	11
HEC2392	14	HEC3150	8	HEC3650	6	HEC3930	11
HEC2707	15	HEC3301	4	HEC3654	5	HEC4100	8
HEC2711	15	HEC3350	4	HEC3680	7	HEC4670	7
HEC2712	16	HEC3357	3	HEC3690	6	HEC4801	10
HEC3100	9	HEC3450	3	HEC3800	10	HEC7000	17
HEC3110	8	HEC3600	6	HEC3830	11	HEC8110	18
						HEC8630	18
						TCS7382	13



<http://www.hosiden.com>

**Head Office**

4-33, Kitakyuhoji 1-chome, Yao-city, Osaka 581-0071, Japan  
Phone : +81-72-993-1010 Fax : +81-72-994-5101

**Japan**

**Overseas Division :**

4-33, Kitakyuhoji 1-chome, Yao-city, Osaka 581-0071, Japan  
Phone : +81-72-993-1010 Fax : +81-72-924-8937

**China**

**Hosiden Electronics(Shanghai) Co., Ltd.**

Room 802, Kirin Plaza, No.666 Gu Bei Road, Changning District, Shanghai P.R.China  
Phone : +86-21-5208-1488 Fax : +86-21-5208-1480

**Hosiden (Shenzhen) Co., Ltd.**

Room2716, Changping Commercial Building, 99 Honghua Road,  
Futian Free Trade Zone, Shenzhen, China  
Phone : +86-755-8348-0952 Fax : +86-755-8359-7722

**Hong Kong**

**Hong Kong Hosiden Ltd.**

Units 1101-02, 11/F., Stelux House, 698 Prince Edward Road East, San Po Kong, Kowloon, Hong Kong  
Phone : +852-23238181 Fax : +852-23520425

**Taiwan**

**Taiwan Hosiden Co., Ltd.**

7F., No.237, Songjiang Road., Zhongshan Dist., Taipei City 104, Taiwan  
Phone : +886-2-2503-5611 Fax : +886-2-2517-8573

**Singapore**

**Hosiden Singapore Pte. Ltd.**

28, Genting, Lane, #04-07, Platinum 28, Singapore 349585  
Phone : +65-6296-8100 Fax : +65-6296-8200

**Malaysia**

**Hosiden Corporation(M)Sdn. Bhd.**

Lot1, Jalan P/1A, Bangi, Industrial Estate, 43650  
Bander Baru Bangi, Selangor Darul Ehsan, Malaysia  
Phone : +60-3-8925-8655 Fax : +60-3-8926-6122

**Thailand**

**Hosiden (Thailand) Co., Ltd.**

889 THAI CC TOWER, 21 Floor, Room 212, South Sathorn Road.,  
Kwaeng Yannawa, Khet Sathorn, Bangkok 10120, Thailand  
Phone : +66-2-673-9760, 9761 Fax : +66-2-673-9762

**Germany**

**Hosiden Europe GmbH**

**Head Office**

Graf-Recke-Straße 82, 40239 Düsseldorf, Germany  
Phone : +49-211-96493-0 Fax : +49-211-96493-90

**France**

**Branch office Paris**

13, rue Camille Desmoulins 92441 Issy Les Moulineaux, France  
Phone : +33-1-5804-2484 Fax : +33-1-5804-2300

**U.K.**

**Hosiden Besson Ltd.**

12 St. Joseph's Trading Estate St. Joseph's Close, Hove, East Sussex,  
BN3 7EZ, United Kingdom  
Phone : +44-1273-860000 Fax : +44-1273-777501

**U.S.A.**

**Hosiden America Corp.**

**Head Office**

120 East State Parkway, Schaumburg, IL, 60173, U.S.A.  
Phone : +1-847-885-8870 Fax : +1-847-885-0063

**San Jose Sales Office**

550 South Winchester Boulevard, Suite 320, San Jose, CA 95128, U.S.A.  
Phone : +1-408-985-8780 Fax : +1-408-985-8785

**Detroit Sales Office**

28970 Cabot Drive, Suite 600, Novi, MI 48377, U.S.A.  
Phone : +1-248-489-0174 Fax : +1-248-489-1154

- The contents described in this catalog may be changed without prior notice due to products improvements or discontinuance of production.
- Every product in this catalog is compliant to RoHS directive.

**⚠ CAUTION FOR SAFETY**

Please use our products properly based on our  
Drawing and Specification.